

SavoyComm ActiveX Control
User Guide

1 Revision History

Version	Date	Name	Description
1.00	Jul, 31 st , 2009	Hikaru Okada	Created as new document
1.00a	Aug, 22 nd , 2009	Hikaru Okada	Splitted into separate document, since number of pages became large.
1.00b	Aug, 28 th , 2009	Hikaru Okada	Remove improper description (socket thing).

2 Table of Contents

1	Revision History	2
2	Table of Contents	3
3	SavoyComm	4
3.1	Properties	5
3.1.1	BaudRate	5
3.1.2	ByteSize	6
3.1.3	ByteStream	7
3.1.4	Connect	8
3.1.5	Count	9
3.1.6	IniFileName	10
3.1.7	IniSection	11
3.1.8	Parity	12
3.1.9	PortNumber	13
3.1.10	StopBit	14
3.2	Methods	15
3.2.1	AboutBox	15
3.2.2	LoadIniFile	16
3.2.3	Send	17
3.2.4	Setup	18
3.3	Events	20
3.3.1	Received	20

3 SavoyComm

SavoyComm control is an assistant product to develop RS232 (serial) communication application software.

Properties

Name	Description
BaudRate	Gets or sets the transfer speed through serial cable.
ByteSize	Gets or sets the size of transfer byte.
ByteStream	Sends or receives 1 byte of data.
Connect	Gets or sets the serial connection status.
Count	Gets the number of bytes in incoming buffer.
IniFileName	Gets or sets INI file name to read/write settings.
IniSection	Gets or sets section name in INI file to read/write settings.
Parity	Gets or sets the type of parity bit.
PortNumber	Gets or sets the serial port number.
StopBit	Gets or sets the type of stop bit.

Methods

Name	Description
AboutBox	Opens version information dialog box on the screen.
LoadIniFile	Loads settings from INI file and initialize properties.
Send	Send specified ASCII string.
Setup	Opens setup dialog box on the screen.

Event

Name	Description
Received	Notifies that SavoyComm control received data.

3.1 Properties

3.1.1 BaudRate

Gets or sets the transfer speed through serial cable.

Value	Description
300	300 bits per second
600	600 bits per second
1200	1200 bits per second
2400	2400 bits per second
4800	4800 bits per second
9600	9600 bits per second
19200	19200 bits per second
38400	38400 bits per second
76800	76800 bits per second

Default value is 9600.

Syntax

Visual Basic 6.0

```
BaudRate As Long
```

Visual C++ 6.0

```
long GetBaudRate()  
void SetBaudRate(long)
```

Example

Visual Basic 6.0

```
.PortNumber = 0  
.BaudRate = 9600  
.ByteSize = 8  
.StopBit = 0  
.Parity = 0  
.Connect = True
```

Visual C++ 6.0

```
m_ctrl.SetPortNumber(0);  
m_ctrl.SetBaudRate(9600);  
m_ctrl.SetByteSize(8);  
m_ctrl.SetStopBit(0);  
m_ctrl.SetParity(0);  
m_ctrl.SetConnect(true);
```

Remarks

Persistent property.

See Also

3.1.2 ByteSize

Gets or sets the size of transfer byte.

Value	Description
7	7-bit
8	8-bit

Default value is 8.

Syntax

Visual Basic 6.0
ByteSize As Integer

Visual C++ 6.0
short GetByteSize() void SetByteSize(short)

Example

Visual Basic 6.0
<pre>.PortNumber = 0 .BaudRate = 9600 .ByteSize = 8 .StopBit = 0 .Parity = 0 .Connect = True</pre>

Visual C++ 6.0
<pre>m_ctrl.SetPortNumber(0); m_ctrl.SetBaudRate(9600); m_ctrl.SetByteSize(8); m_ctrl.SetStopBit(0); m_ctrl.SetParity(0); m_ctrl.SetConnect(true);</pre>

Remarks

Persistent property.

See Also

3.1.3 ByteStream

Sends or receives 1 byte of data. If no data exists in incoming buffer, this function will wait for an incoming byte. Check Count property to make sure at least 1 byte is available in incoming buffer.

Syntax

Visual Basic 6.0

```
ByteStream As Integer
```

Visual C++ 6.0

```
short GetByteStream()  
void SetByteStream(short)
```

Example

Visual Basic 6.0

```
If .Count > 0 Then  
    Dim sChar As Integer  
    sChar = .ByteStream  
    ...
```

Visual C++ 6.0

```
If(m_ctrl.GetCount())>0  
{  
    short sChar = m_ctrl.GetByteStream();  
    ...
```

Remarks

See Also

3.1.4 Connect

Gets or sets the serial connection status. If Connect property is set to true, SavoyComm control will attempt to open specified serial port. If serial port has not been opened, Connect property will be set to false.

Syntax

Visual Basic 6.0

```
Connect As Boolean
```

Visual C++ 6.0

```
BOOL GetConnect()  
void SetConnect(BOOL)
```

Example

Visual Basic 6.0

```
.PortNumber = 0  
.BaudRate = 9600  
.ByteSize = 8  
.StopBit = 0  
.Parity = 0  
.Connect = True
```

Visual C++ 6.0

```
m_ctrl.SetPortNumber(0);  
m_ctrl.SetBaudRate(9600);  
m_ctrl.SetByteSize(8);  
m_ctrl.SetStopBit(0);  
m_ctrl.SetParity(0);  
m_ctrl.SetConnect(true);
```

Remarks

See Also

3.1.5 Count

Gets the number of bytes in incoming buffer.

Syntax

Visual Basic 6.0

```
Count As Long
```

Visual C++ 6.0

```
long GetCount()
```

Example

Visual Basic 6.0

```
If .Count > 0 Then
  Dim sChar As Integer
  sChar = .ByteStream
  ...
```

Visual C++ 6.0

```
If(m_ctrl.GetCount())>0)
{
  short sChar = m_ctrl.GetByteStream();
  ...
```

Remarks

Read-only property.

See Also

3.1.6 IniFileName

Gets or sets INI file name to read/write settings. If INI file name is either full path name or containing relative reference of folder name, INI file will be created and read in such location. Otherwise, INI file will be created in Windows OS system folder. For this reason, it is highly recommended using with folder name. If current directory is the location, add “.” at the beginning.

Either “/” (slash) or “\” (back slash) can be used for separator of folder name.

Syntax

Visual Basic 6.0

```
IniFileName As String
```

Visual C++ 6.0

```
CString GetIniFileName()  
void SetIniFileName(LPCTSTR)
```

Example

Visual Basic 6.0

```
.IniFileName = “./Savoy.ini”
```

Visual C++ 6.0

```
m_ctrl.SetIniFileName(“./Savoy.ini”);
```

Remarks

Persistent property.

See Also

3.1.7 IniSection

Gets or sets section name in INI file to read/write settings. If multiple SavoyComm control were embedded in one project, it is possible to share same INI file by changing section name.

Default setting is "SavoyComm".

Syntax

Visual Basic 6.0

```
IniSection As String
```

Visual C++ 6.0

```
CString GetIniSection()  
void SetIniSection(LPCTSTR)
```

Example

Visual Basic 6.0

```
.IniSection = "Host" ' [Host] section
```

Visual C++ 6.0

```
m_ctrl.IniSection("Host"); // [Host] section
```

Remarks

Persistent property.

See Also

3.1.8 Parity

Gets or sets the type of parity bit.

Value	Description
0	None
1	Odd parity
2	Even parity

Default value is 0.

Syntax

Visual Basic 6.0

Parity As Integer

Visual C++ 6.0

```
short GetParity()  
void SetParity(short)
```

Example

Visual Basic 6.0

```
.PortNumber = 0  
.BaudRate = 9600  
.ByteSize = 8  
.StopBit = 0  
.Parity = 0  
.Connect = True
```

Visual C++ 6.0

```
m_ctrl.SetPortNumber(0);  
m_ctrl.SetBaudRate(9600);  
m_ctrl.SetByteSize(8);  
m_ctrl.SetStopBit(0);  
m_ctrl.SetParity(0);  
m_ctrl.SetConnect(true);
```

Remarks

Persistent property.

See Also

3.1.9 PortNumber

Gets or sets the serial port number. Port number starts at 0. For example, comm #1 is 0, comm. #2 is 1.

Default value is 0.

Syntax

Visual Basic 6.0

```
PortNumber As Integer
```

Visual C++ 6.0

```
short GetPortNumber()  
void SetPortNumber(short)
```

Example

Visual Basic 6.0

```
.PortNumber = 0  
.BaudRate = 9600  
.ByteSize = 8  
.StopBit = 0  
.Parity = 0  
.Connect = True
```

Visual C++ 6.0

```
m_ctrl.SetPortNumber(0);  
m_ctrl.SetBaudRate(9600);  
m_ctrl.SetByteSize(8);  
m_ctrl.SetStopBit(0);  
m_ctrl.SetParity(0);  
m_ctrl.SetConnect(true);
```

Remarks

Persistent property.

See Also

3.1.10 StopBit

Gets or sets the type of stop bit.

Value	Description
0	1-bit
1	1.5-bit
2	2-bit

Default value is 0.

Syntax

Visual Basic 6.0

```
StopBit As Integer
```

Visual C++ 6.0

```
short GetStopBit()  
void SetStopBit(short)
```

Example

Visual Basic 6.0

```
.PortNumber = 0  
.BaudRate = 9600  
.ByteSize = 8  
.StopBit = 0  
.Parity = 0  
.Connect = True
```

Visual C++ 6.0

```
m_ctrl.SetPortNumber(0);  
m_ctrl.SetBaudRate(9600);  
m_ctrl.SetByteSize(8);  
m_ctrl.SetStopBit(0);  
m_ctrl.SetParity(0);  
m_ctrl.SetConnect(true);
```

Remarks

Persistent property.

See Also

3.2 Methods

3.2.1 AboutBox

Opens version information dialog box on the screen.

Syntax

Visual Basic 6.0

```
Sub AboutBox()
```

Visual C++ 6.0

```
void AboutBox()
```

Return Value

None.

Example

Visual Basic 6.0

```
.AboutBox
```

Visual C++ 6.0

```
m_ctrl.AboutBox();
```

Remarks

See Also

3.2.2 LoadIniFile

Loads settings from INI file and initialize properties. If loading was failed, values in persistent resource will be set.

LoadIniFile method probably is called at the beginning of application, since it retrieves saved parameters by Setup method.

Syntax

Visual Basic 6.0

```
Function LoadIniFile() As Boolean
```

Visual C++ 6.0

```
BOOL LoadIniFile()
```

Return Value

Return true if loading was successful. Otherwise return false. If false was returned, IniFileName property or IniSection property might be incorrect.

Example

Visual Basic 6.0

```
Private Sub Form_Load()  
    SwingHsms1.LoadIni  
End Sub
```

Visual C++ 6.0

```
void CxxxView::OnInitialUpdate()  
{  
    ...  
    m_ctrl.LoadIni();  
    ...  
}
```

Remarks

See Also

3.2.3 Send

Send specified ASCII string.

Syntax

Visual Basic 6.0

```
Function Send(IpszData As String) As Boolean
```

Visual C++ 6.0

```
BOOL Send(LPCTSTR IpszData)
```

Argument	Description
IpszMessage	ASCII string to be sent

Return Value

Return true if transmission was successful. Otherwise return false.

Example

Visual Basic 6.0

```
.Send "This is a test"
```

Visual C++ 6.0

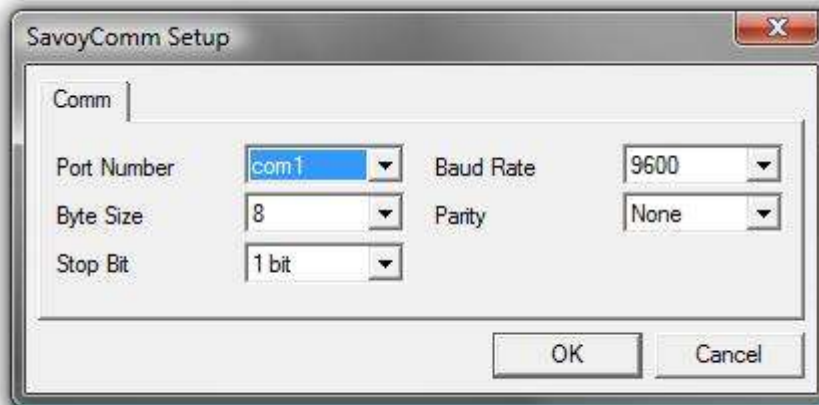
```
m_ctrl.Send("This is a test");
```

Remarks

See Also

3.2.4 Setup

Opens setup dialog box on the screen. If user modified parameter and press OK button, data will be written in INI file.



Item	Description
Comm port #	Serial port number
Baud rate	Communication speed
Byte size	Length of each byte
Parity	Parity bit
Stop bit	Length of stop bit

Syntax

Visual Basic 6.0

```
Function Setup(IpszCaption As String) As Boolean
```

Visual C++ 6.0

```
BOOL Setup(LPCTSTR IpszCaption)
```

Argument	Description
IpszCaption	Caption title of dialog box. If this value is NULL or "" (empty) string, the string of IniSection property will be used for caption tile.

Return Value

If user pressed OK button and parameters were saved in INI file successfully, Setup method returns true. If user pressed Cancel button or parameter saving was failed, Setup method returns false.

Example

Visual Basic 6.0

```
.Setup "Comm Configuration"
```

Visual C++ 6.0

```
m_ctrl.Setup("Comm Configuration");
```

Remarks

See Also

3.3 Events

3.3.1 Received

Notifies that SavoyComm control received data.

Syntax

Visual Basic 6.0

```
Event Received(IDataCount As Long)
```

Visual C++ 6.0

```
void OnReceived(long IDataCount)
```

Argument	Description
IDataCount	Number of bytes in buffer

Example

Visual Basic 6.0

```
If IDataCount > 0 Then  
  Dim sChar As Integer  
  sChar = .ByteStream  
  ...
```

Visual C++ 6.0

```
If(IDataCount>0)  
{  
  short sChar = m_ctrl.GetByteStream();  
  ...
```

Remarks

See Also